

# Mi-BEAM Virtual Panels Quick Start Guide

---

## System Requirements:

**Operating System:** Microsoft Windows® 10/11

**CPU:** Intel® Core™ i3 or higher

**RAM:** 4GB or higher

**Free Disk Space:** 1GB (For full installation including drivers)

**Connectivity:** Ethernet 100Base T, USB 2.0, RS232, GPIB

## Pre-Requisites Software:

.NET 6.0 Desktop Runtime V6.0.36

National Instruments® NI VISA Runtime Engine Software Version 17 or higher

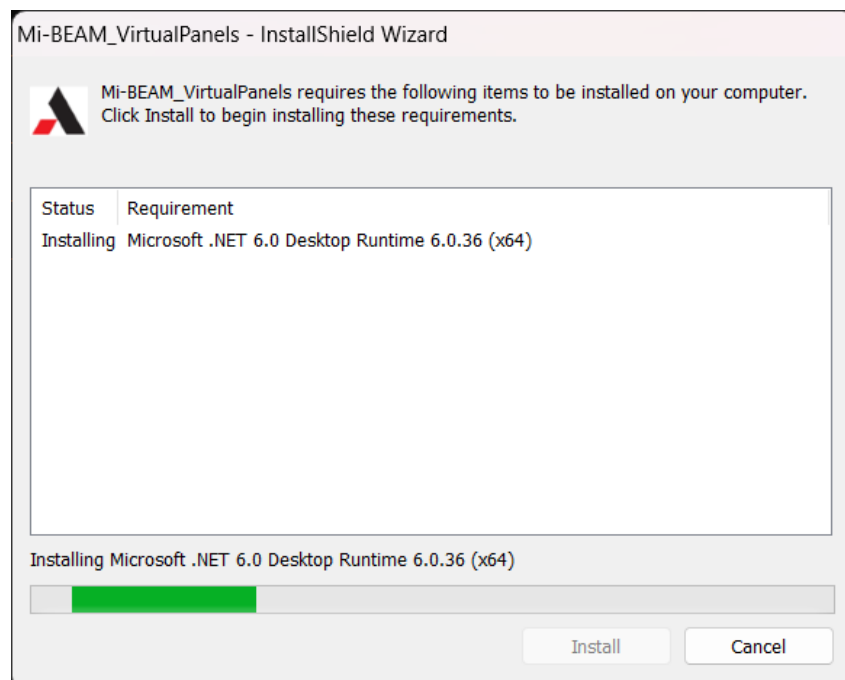
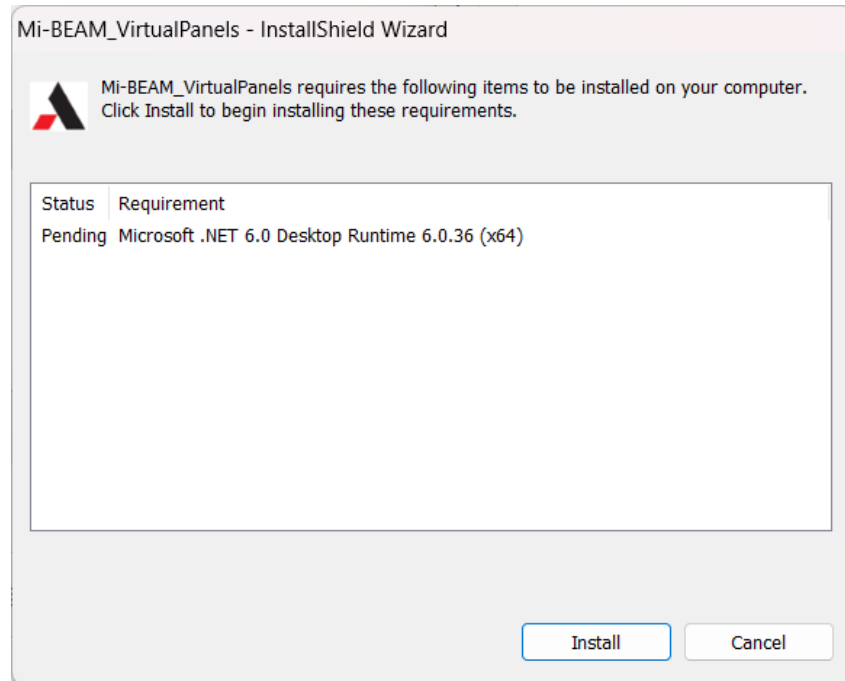
National Instruments® NI VISA .NET Runtime Engine

National Instruments® NI-488.2 Driver v14.0 or higher (Only required if using GPIB)

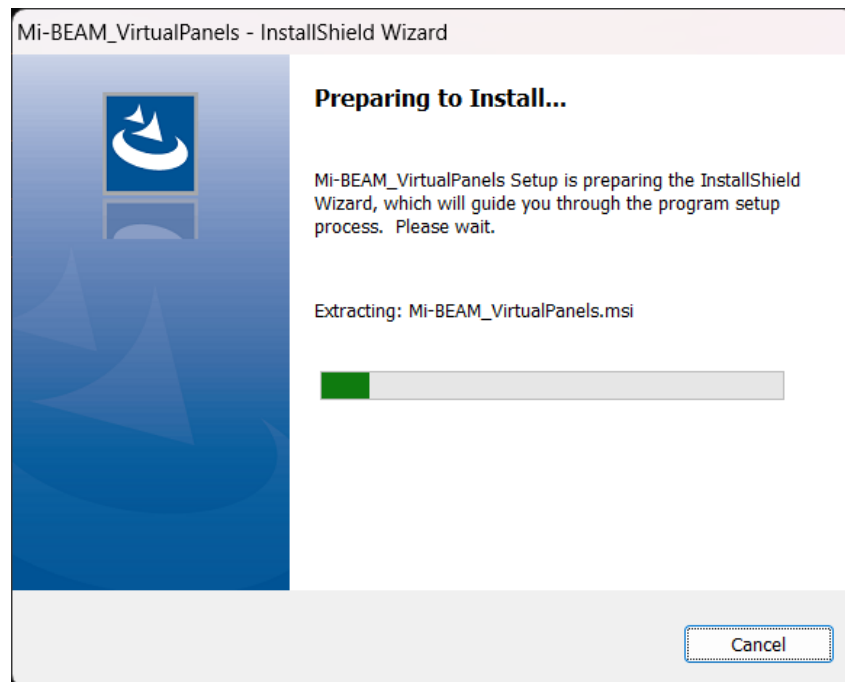
## Mi-BEAM Virtual Panels Installation Instructions:

**IMPORTANT NOTE:** If any previous version of Mi-BEAM Virtual Panels is already installed in your system. This must be uninstalled first before continuing with the installation guide.

1. Run the Mi-BEAM Virtual Panels Installer. If .NET 6.0 Runtime is not installed the following message window will appear. Click Install.

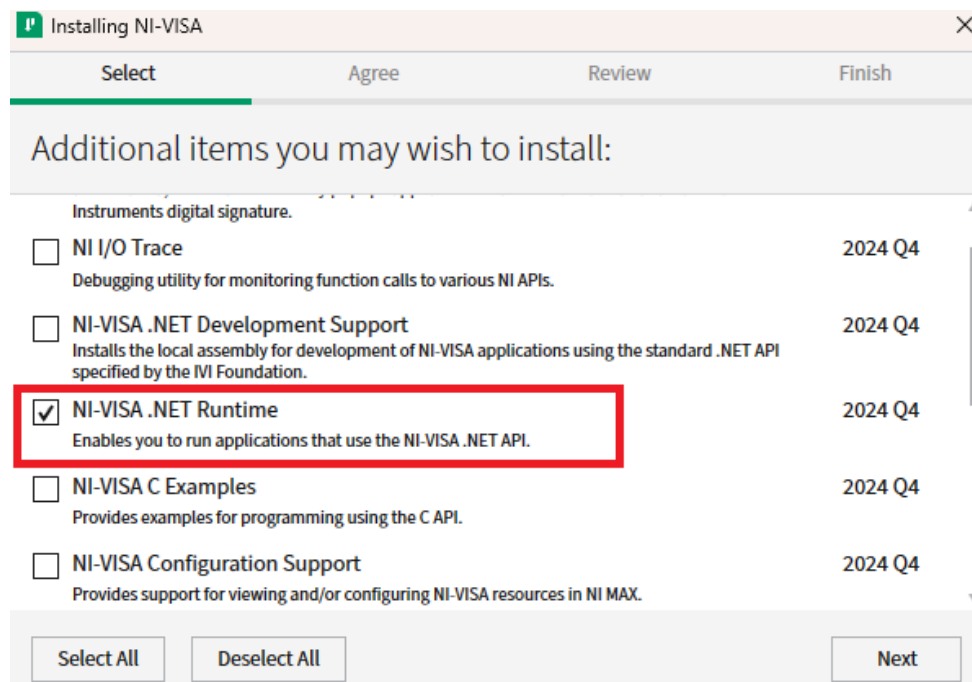


- After successfully installing .NET 6.0 Runtime. The installer will automatically proceed with the installation.

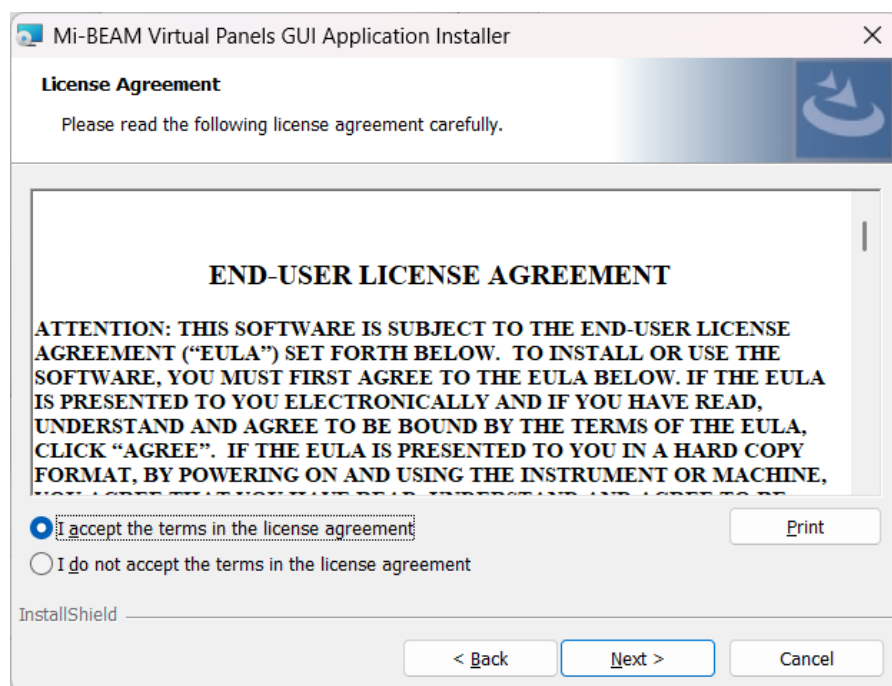
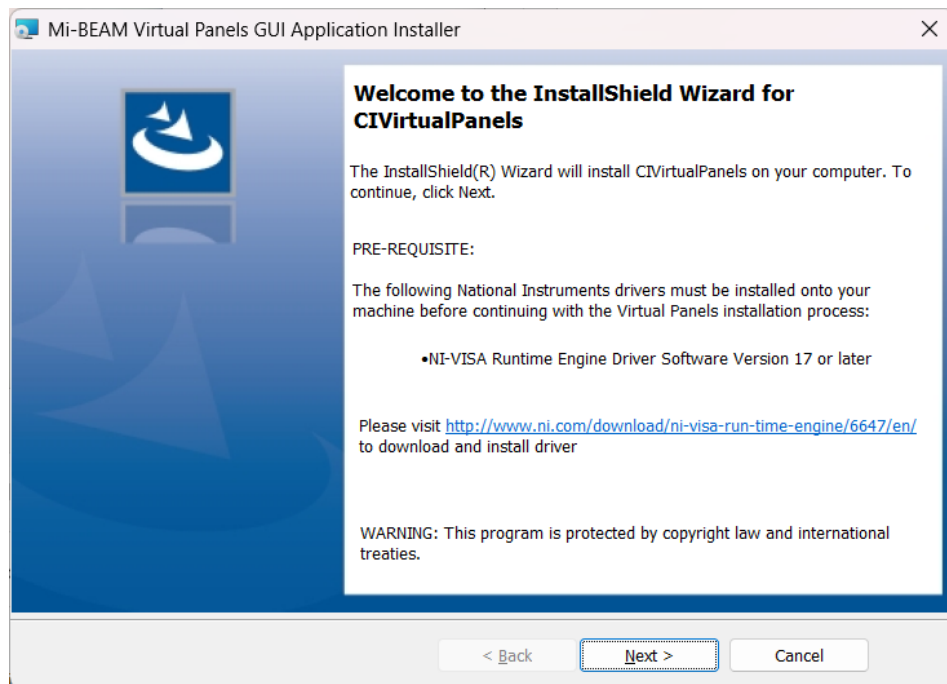


- If NI-VISA is not installed, Click the link <http://www.ni.com/download/ni-visa-run-time-engine/6647/en/> to download NI-VISA Runtime Engine Software Version 17 or later. Ensure that **NI-VISA .NET Runtime** is checked during the installation.

**IMPORTANT NOTE: To download NI software a National Instrument account is needed. It is free to create an account.**



4. After successful installation of NI-VISA runtime and NI-VISA .NET continue with the installation.



Mi-BEAM Virtual Panels GUI Application Installer

Customer Information

Please enter your information.

User Name:

Admin

Organization:

InstallShield

< Back

Next >

Cancel

Mi-BEAM Virtual Panels GUI Application Installer

Ready to Install the Program

The wizard is ready to begin installation.

Click Install to begin the installation.

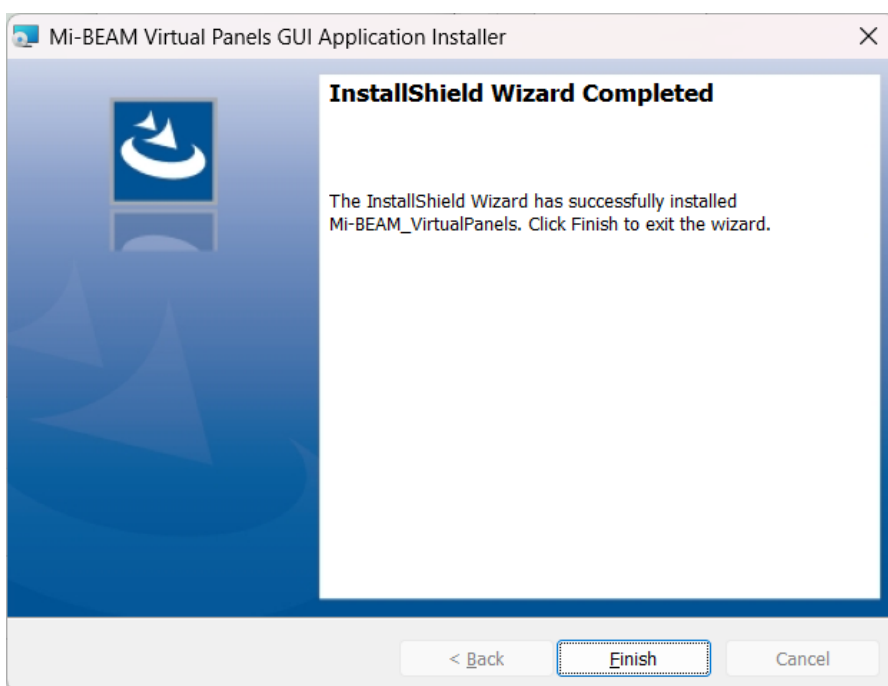
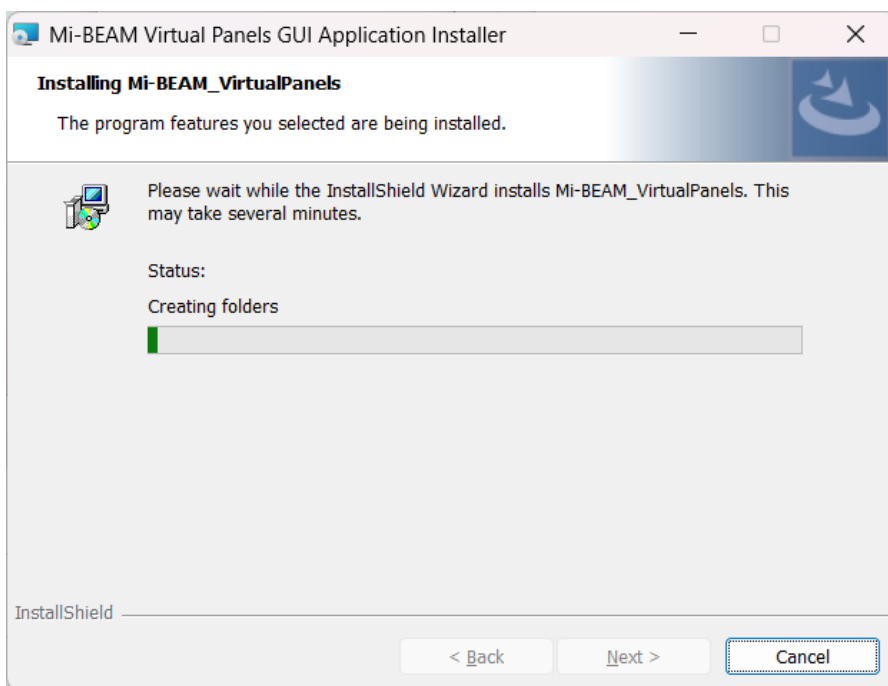
If you want to review or change any of your installation settings, click Back. Click Cancel to exit the wizard.

InstallShield

< Back

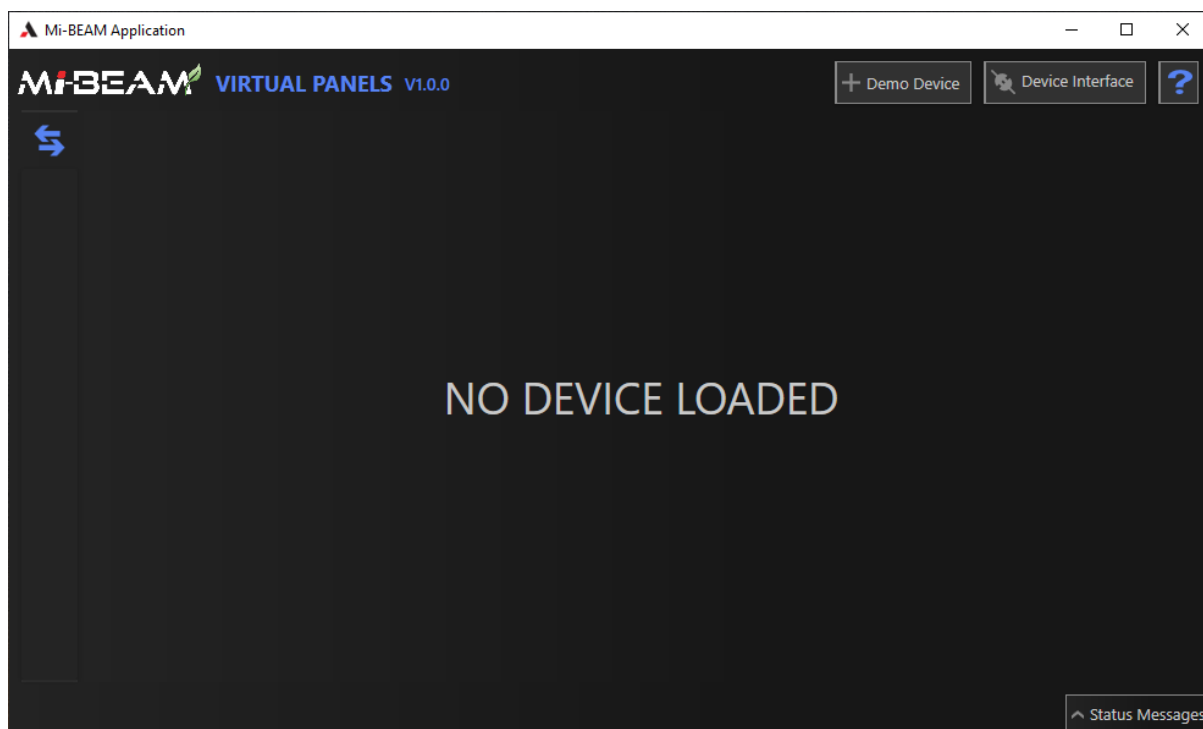
Install

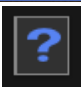
Cancel



5. After successful installation of Mi-BEAM virtual panels, launch the virtual panels by clicking on the icon provided in the desktop.





6. Click on 'Help'  button for detailed information on using Mi-BEAM virtual panels application.

## **Mi-BEAM Virtual Panels Technical Support:**

For technical support or to report bugs and feedback, please contact AMETEK Programmable Power at:

Telephone:

800 733 5427 (toll free in North America)

858 450 0085 (direct)

Fax:

858 458 0267

Email:

[sales.ppd@ametek.com](mailto:sales.ppd@ametek.com)

[service.ppd@ametek.com](mailto:service.ppd@ametek.com)

Web:

[www.programmablepower.com](http://www.programmablepower.com)